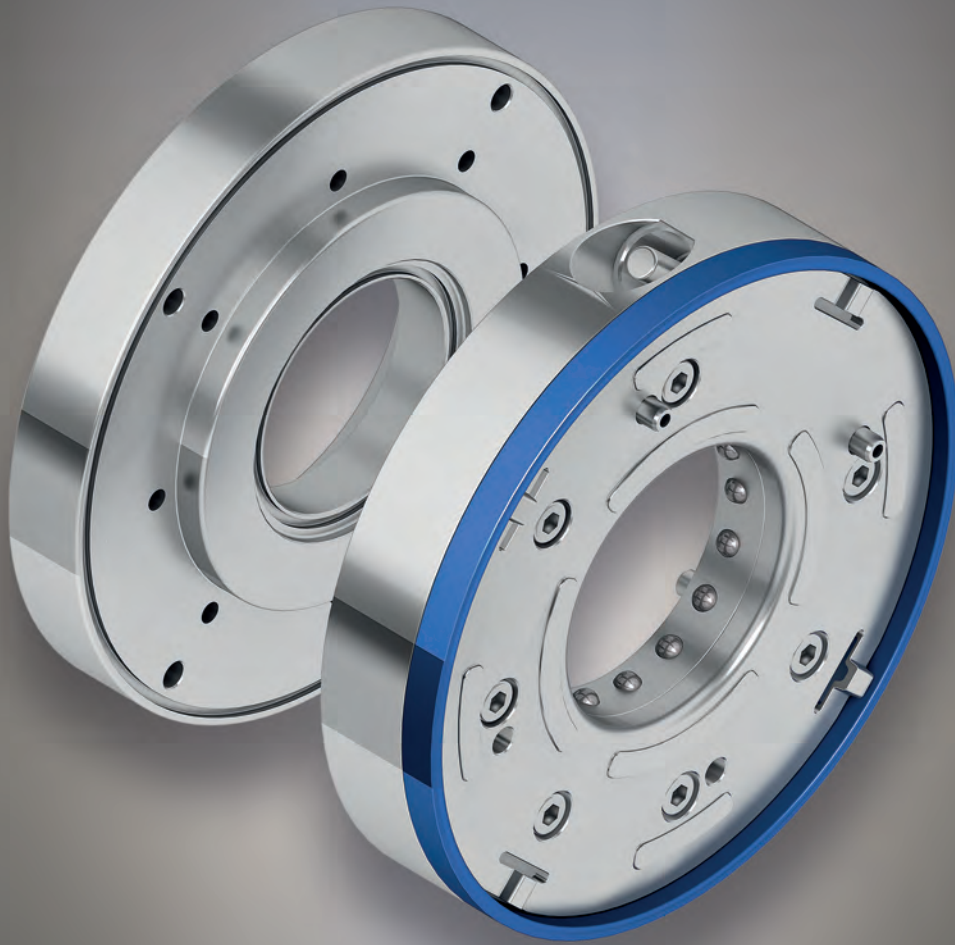


ROTOGRIP

PRODUCING SYSTEMATICALLY



The Roto-Grip system

The palletizing system for
rotative machining



The common denominator

With Roto-Grip ...

... different spindle connections are reduced to a common denominator. Thus you can produce faster, more flexible and efficient.



Without Roto-Grip ...

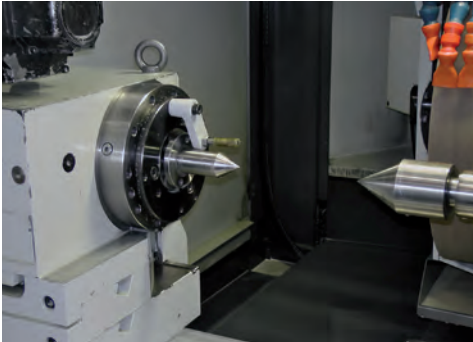
... every machine remains a world of its own. Every machine needs its own clamping tools. The result: immense costs.



- ① Machine 1
- ② Machine 2
- ③ Machine 3
- ④ Adapter plate
- ⑤ Roto-Grip
- ⑥ Roto-Grip pallet with various chucks

Up to 45% more efficiency of your existing machine outfit – due to Roto-Grip.

one-of-a-kind
worldwide



Actual state.

- Uneconomic manufacturing
- Non-optimized manufacturing processes
- No standardization
- High costs per unit
- Excessive delivery times
- Unfulfilled delivery dates
- High error rate
- Pricing pressure and competitive pressure

*Many say you can't change that.
This is what our routine looks like:*



Target state.

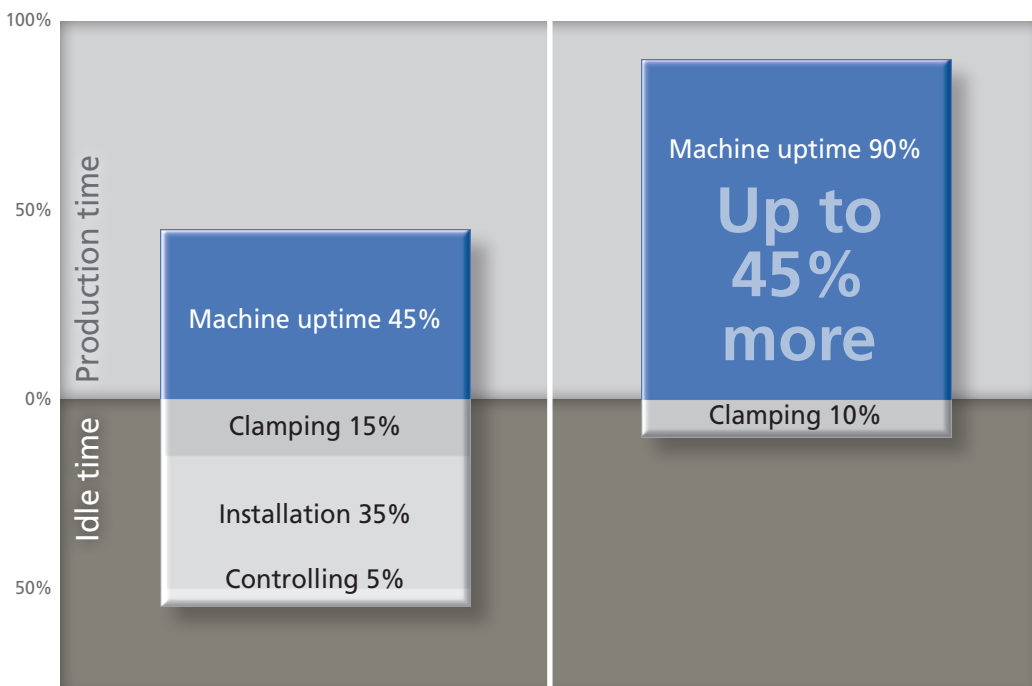
- Higher productivity and income
- Optimized manufacturing processes
- Standardized interfaces
- Low unit costs
- Reduced delivery times
- Adherence to delivery dates
- Low error rate
- Competitive capacity

*We say everything changes with Power-Grip.
And this is what your Power-Grip future looks like:*

ROTOGRIP



*Optimized use of
production time.*



The System

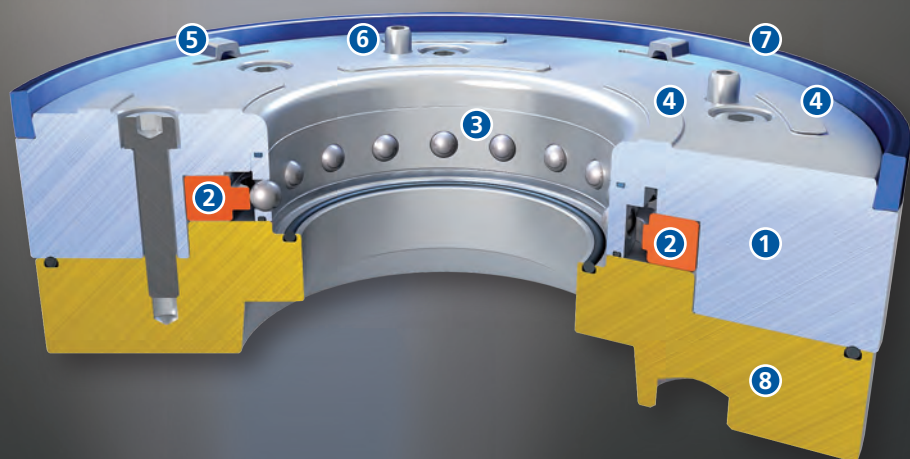


- ① Roto-Grip centring unit
- ② Clamping ring
- ③ Ball cage
- ④ Z-reference
- ⑤ Centring cam
- ⑥ Pre-centring
- ⑦ Sealing ring
- ⑧ Adapter plate

The Technology

Roto-Grip cross section

By using the suitable adapter plate (yellow) all the different spindle adapters can be reduced to a common denominator.



Roto-Grip: The flexible palletizing system for rotative machining.

**one-of-a-kind
worldwide**



Roto-Grip security

Clamping and releasing is carried out manual. During the fastening of Roto-Grip you can hear how the the fastening screw of the clamping mechanism latches.

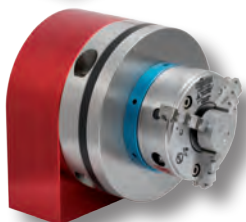
Roto-Grip.
A great many of possibilities.



Roto-Grip with pallet Power-Grip



Roto-Grip with pallet Poly-Grip



Roto-Grip with pallet three jaw chuck



Roto-Grip with pallet expanding mandrel

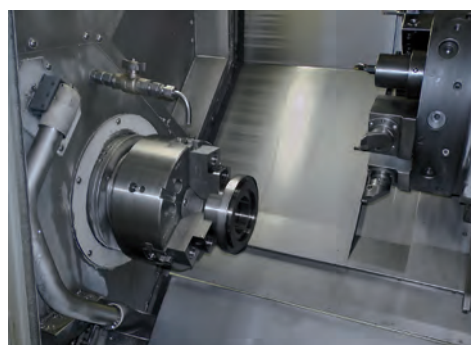


Roto-Grip with pallet Defo-Grip

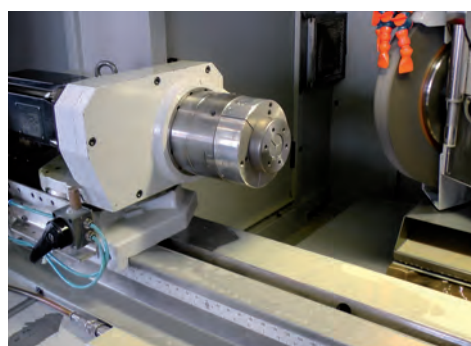
Roto-Grip.
Who changes will profit.

With Roto-Grip it doesn't play a role for the machine which chuck you use. Due to the ingenious continuous interface Roto-Grip all available tensioning means can flexibly be applied.

The consequences: The aquisition costs for your tensioning means will be reduced. Your flexibility and your competitiveness will increase.



Turning machine without Roto-Grip



Grinding machine without Roto-Grip

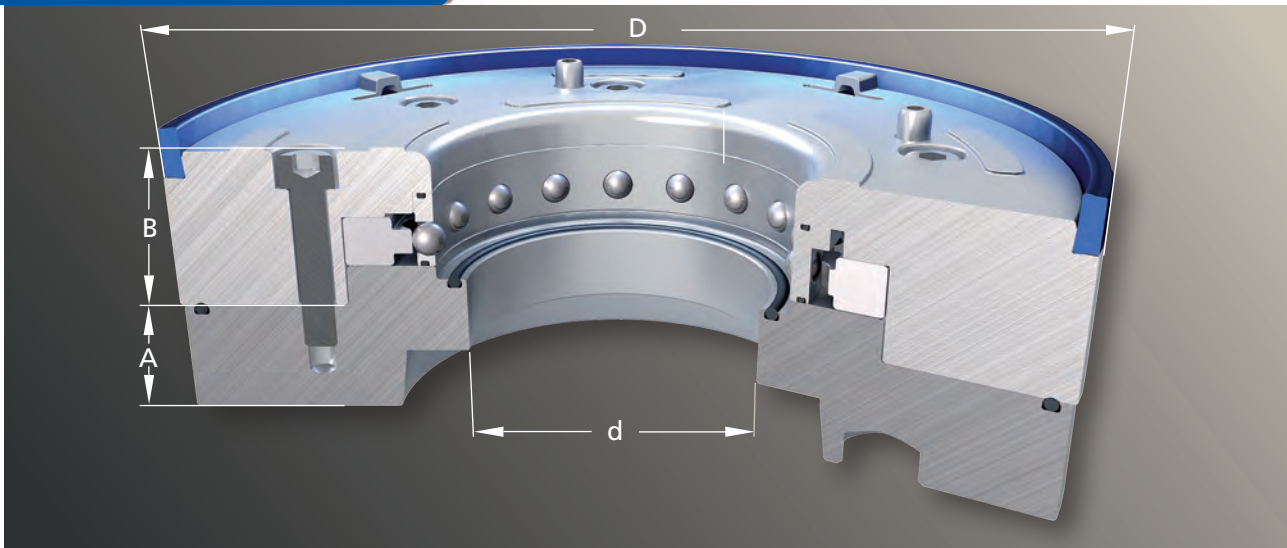
ROTOGRIP



Profitableness.

Flexibility.

Competitiveness.

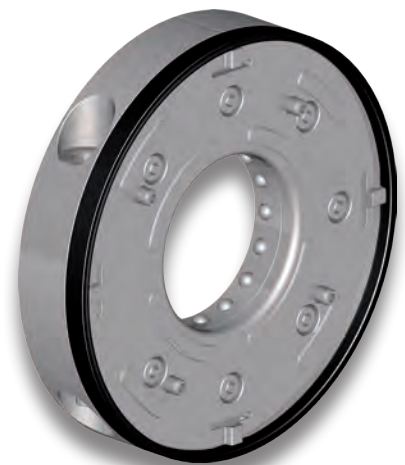


D Major diameter (mm)	d (max.) Lead through (mm)	A* Height of spindle adapter (mm)	B Height up to Z-reference (mm)
210	72	27	39

*depending on machine the height can vary.

Roto-Grip technical Information	
Repeat accuracy	0.002 mm (on length 200 mm)
Indexing accuracy	0.005 mm (on length 200 mm)
Axial run-out accuracy	0.002 mm (depends on machine)
True-running accuracy	0.005 mm (depends on machine)
Maximum revolution speed	4500 rpm.
Maximum workpiece weight	200 kg
Maximum workpiece diameter	280 mm, three jaw drill diameter 350 mm
Maximum workpiece length	500 mm
Tension power	40.000 N (self-locking, compensation of temperature and vibration)

Roto-Grip pallet carrier x1	
Repeat accuracy	0.002 mm (on length 200 mm)
System accuracy	0.005 mm (on length 200 mm)
Automatable	no
Clamping power	15.000 N
Tension power	40.000 N (self-locking with pre-tension)
Release	manual
Spannen	manual with locking device (click system)
Reference surface cleaning	manual
Material	Centering unit, INOX steel, hardened, honed, Spindle adapter, INOX steel, stainless and acid-resistant
Application	Rotating, cylindrical grinding, measuring, ...
Fastening	Individual, depends on machine



Art-Nr.	Diameter D mm	Lead through d mm	Height B mm	Standard Pallet sizes (with chucking bolts) mm
PR 0102020000	210	72	39	210 x 24 (56)

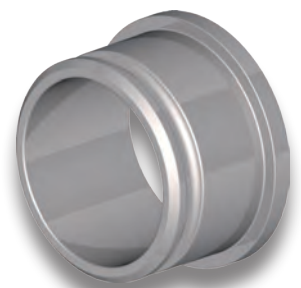


Roto-Grip pallet x1	
Material	Standard pallets: INOX steel
Reference elements	4 x integrated reference nuts
Reference surface	stainless
Automatable	no
Application	Rotating, cylindrical grinding, measuring, ...
Model	Overtorqued, honed. Further models on request.

Art-Nr.	Diameter D mm	Lead trough d mm	Height B mm	Model
PR 4201201000	210	72	24	turned
PR 4201201100	210	72	24	honed

Roto-Grip chucking bolts	
Material	Standard: INOX steel, hardened, turned
Application	Roto-Grip pallet x1 with lead trough
Model	self-supporting, floating bearing

Art-Nr.	Diameter D in mm	Lead trough d in mm	Height B in mm	Model
PR 4200100000	97	72	56	hardened, turned



ROTOGRIP

PRODUCING SYSTEMATICALLY

Please also note the full range of our clamping systems:

GENIUSGRIP
CLAMPING SYSTEMATICALLY

The zero-point clamping system for large-scale machining centres for milling and turning section

POWERGRIP
PALLETIZING SYSTEMATICALLY

The consistent zero-point palletizing system for all processing operations

MICROGRIP
PRODUCING SYSTEMATICALLY

The modular mini zero-point palletizing system for work pieces and gripper technology

SMARTGRIP
WIRE ERODING - SYSTEMATICALLY

The modular zero-point palletizing system for wire EDM-ing

POLYGRIP
COMBINING SYSTEMATICALLY

The combined electrode palletizing system

DEFOGRIP
PRODUCING SYSTEMATICALLY

The workpiece clamping system

ROTOGRIP
PRODUCING SYSTEMATICALLY

The palletizing system for rotative machining

Headquarters • worldwide distribution

PAROTEC
spanntechnik • robotik • engineering

PAROTEC AG
Lerchentalstraße 29
CH-9016 St. Gallen
Tel.: +41 (0)71 394 10 00
info@parotec.ch
www.parotec.ch



Distribution Germany and Benelux

PARTOOL
Palettieren • Automatisieren • Rationalisieren

PARTOOL GmbH & Co. KG
Edisonstraße 19
D-90431 Nürnberg
Tel.: +49 911 65 65 89- 0
info@partool.de
www.partool.de